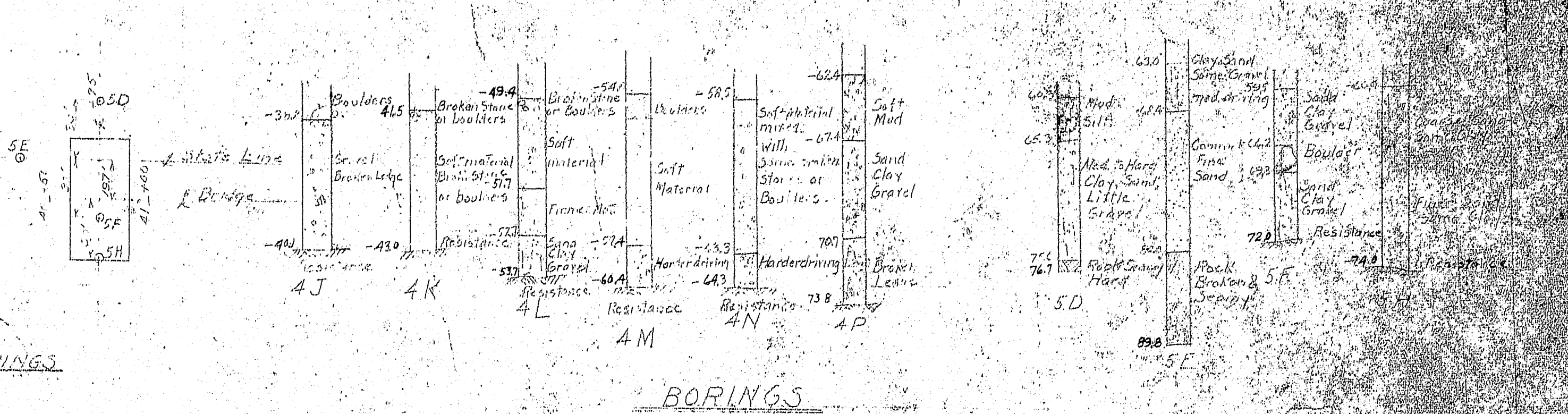
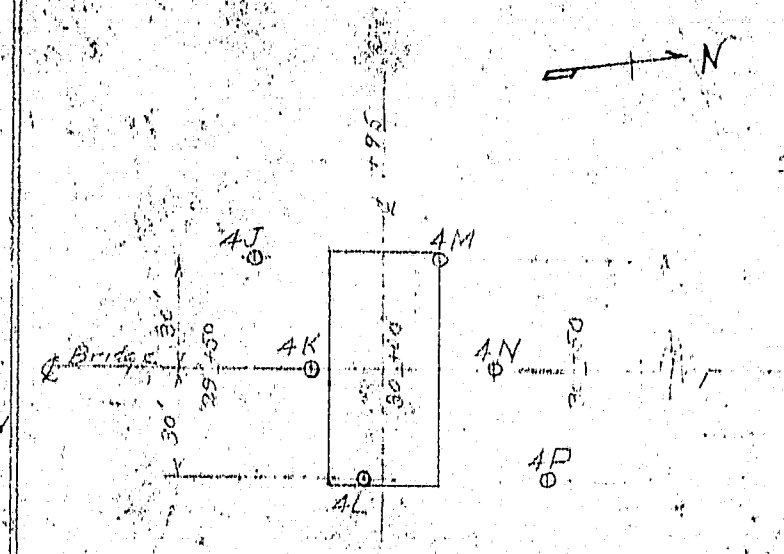
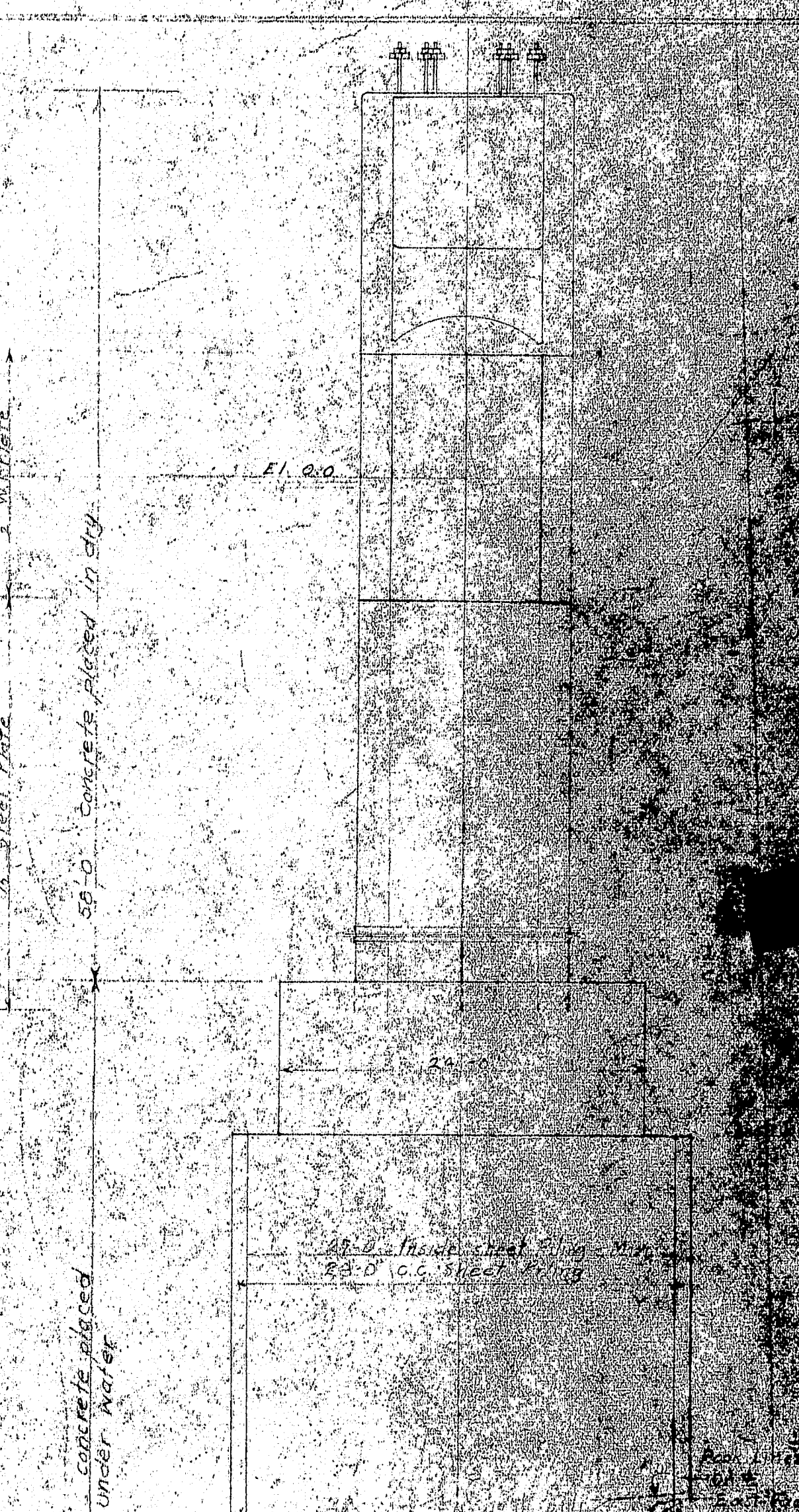
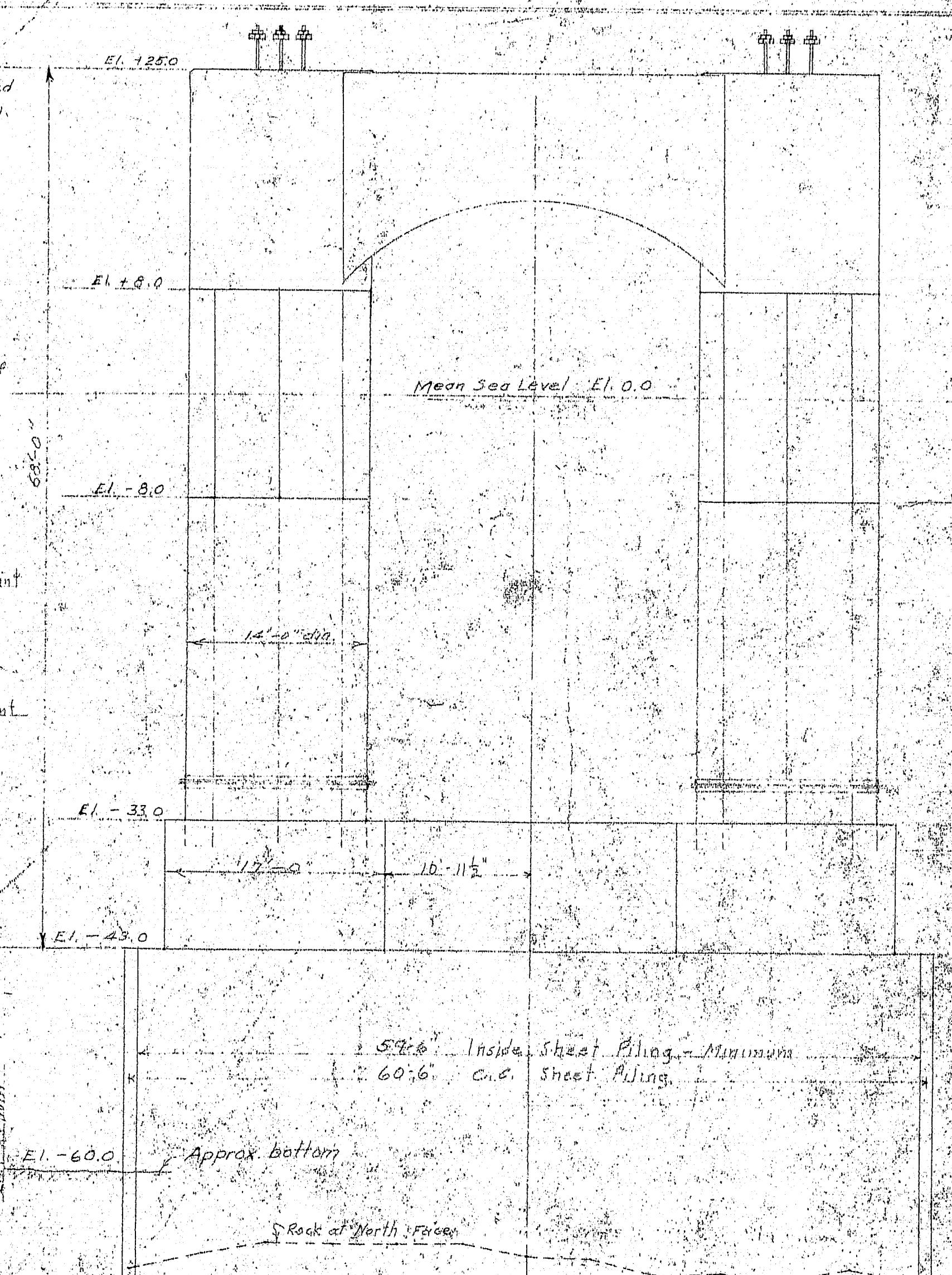
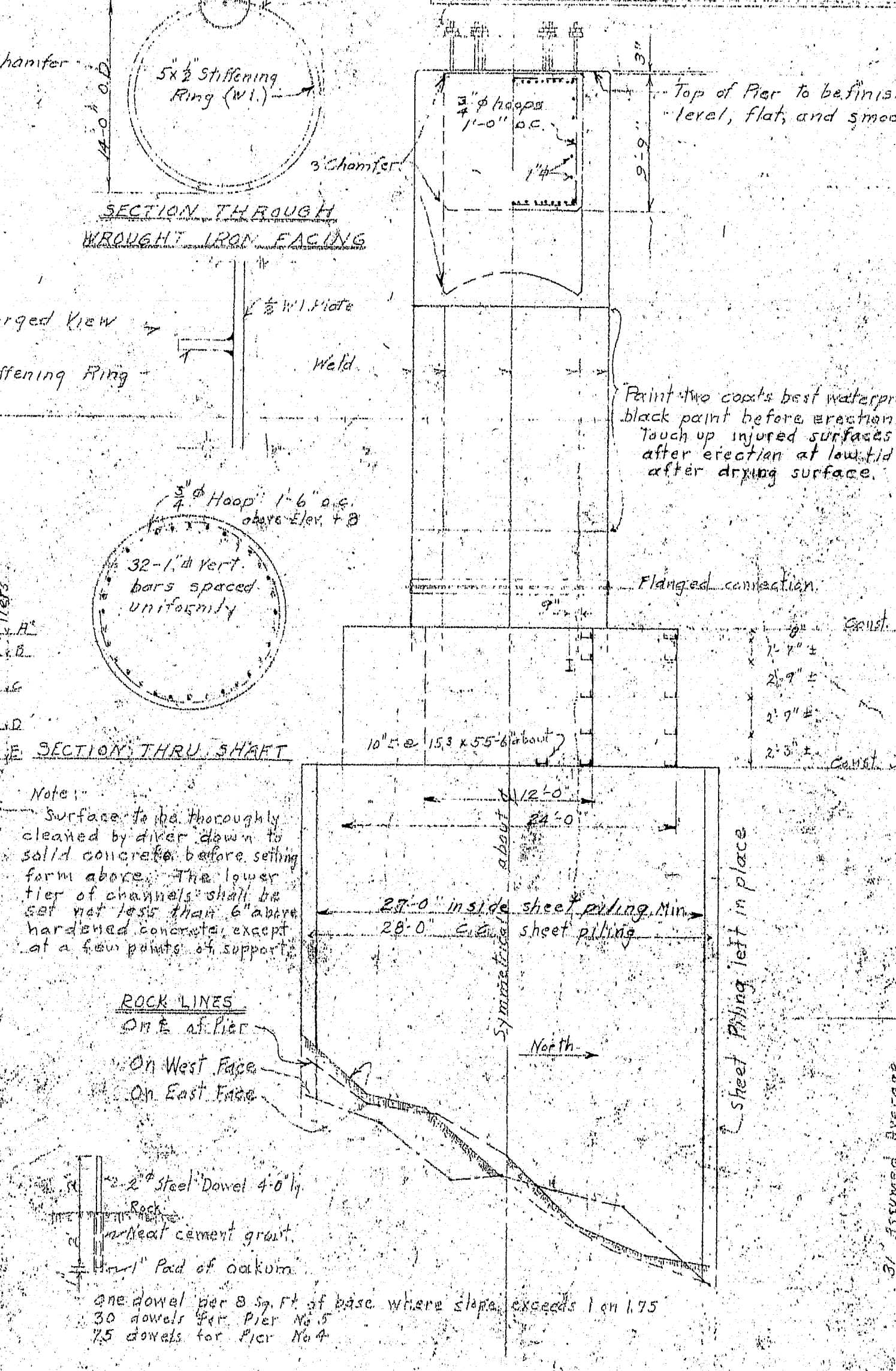
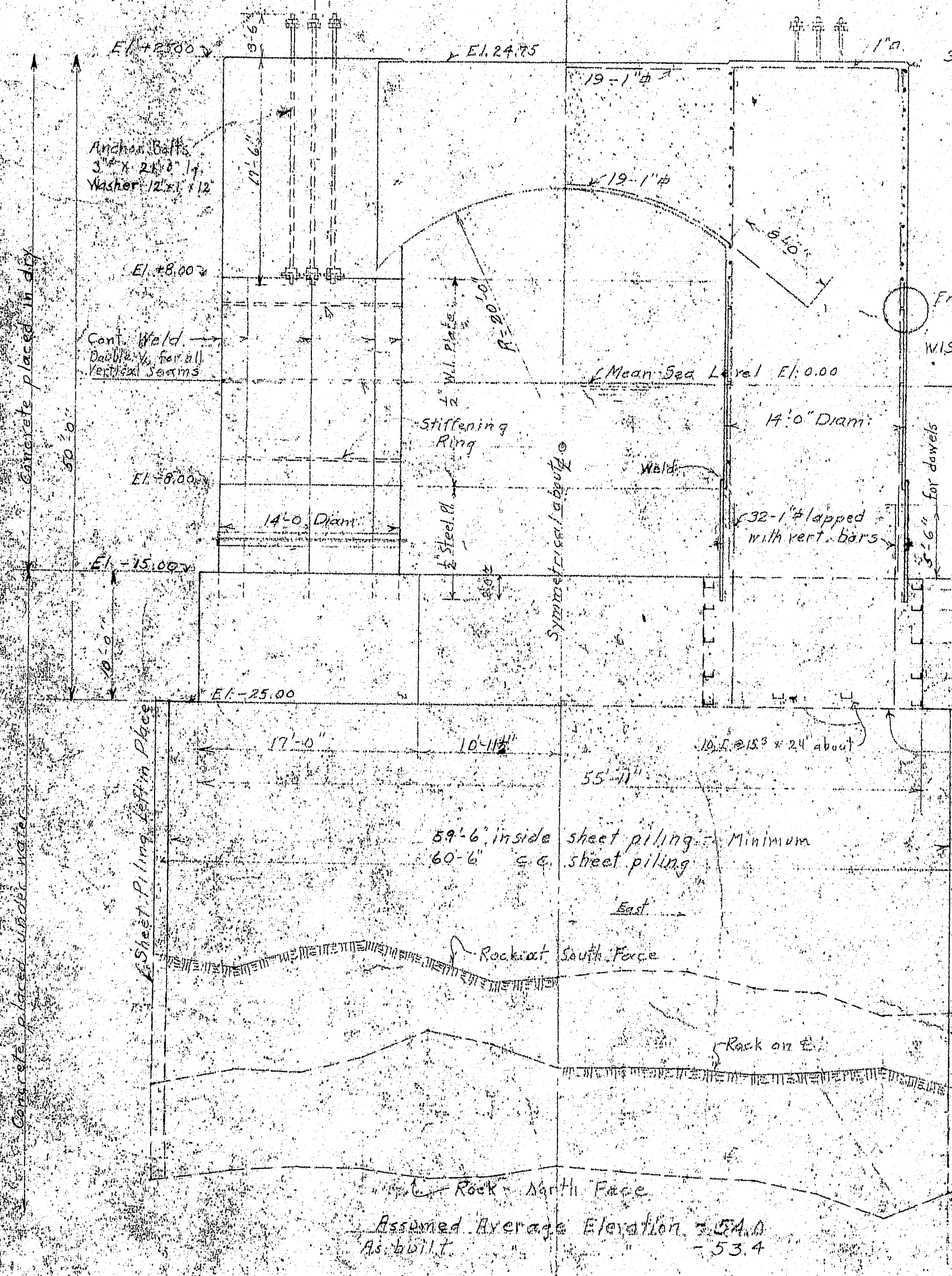


Reinforcement at Top.  
All bars this high are 1" except hoops.



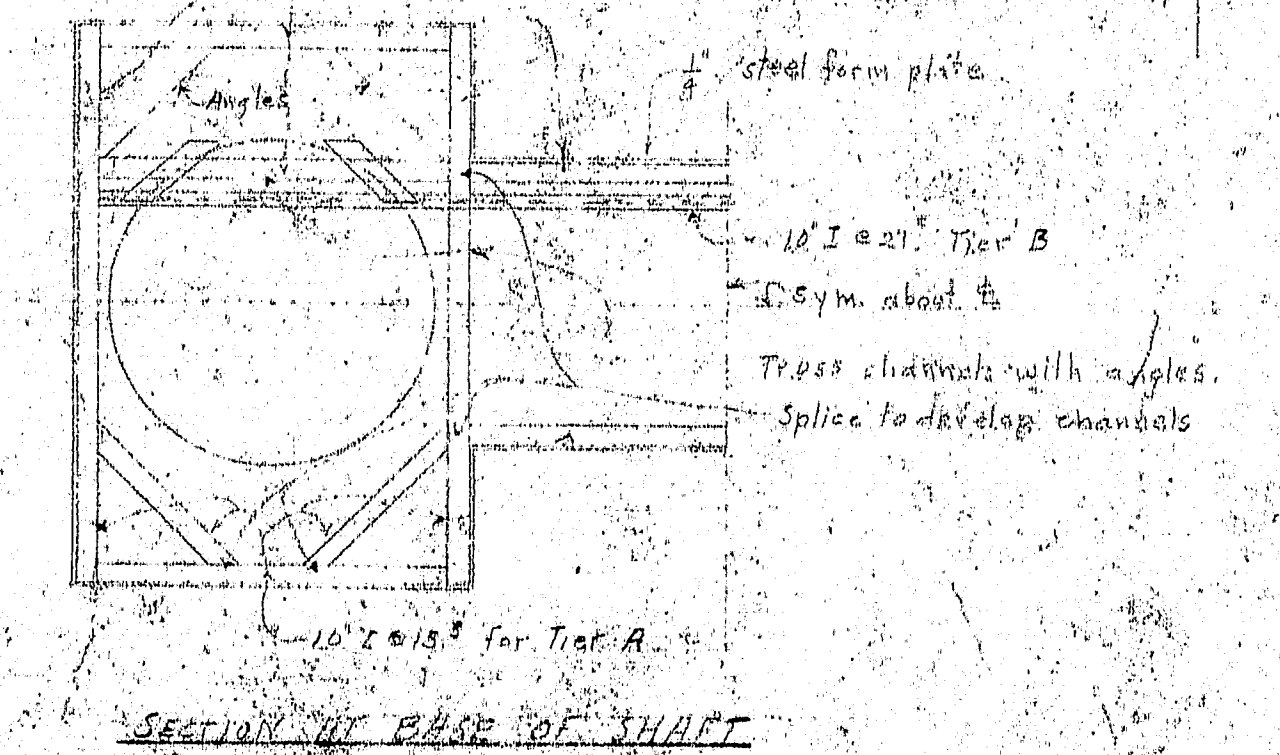
BORINGS



PIER NO. 4

PIER NO. 5 SOUTH ELEVATION

**GENERAL NOTES**  
CONCRETE: Concrete placed under water shall be Class A in accordance with A.A.S.H.O. specifications.  
ANCHOR BOLTS: Anchor bolts for the towers shall be furnished by the contractor for the superstructure and shall be placed by the contractor for the substructure. The latter shall provide a steel frame to hold the bolts in accurate position while concrete is poured.  
SHEET PILING: Sheet Piling left in place shall be of steel and shall have a minimum web thickness of 3/8 inch.  
REINFORCEMENT: All reinforcement shall have a minimum cover of 4 inches of concrete.



**REVISIONS**  
Sept. 24, 1937 - For locations of foundations and affected estimated quantities.  
Jan. 26, 1938 - Revised 10' slab under shafts to permit placing by tremie and use of changes instead of being for reinforcement.  
Feb. 11, 1938 - Added 6 steel shafts below W.L. Plate, cutting heap Rein. below Elev. +8.  
July 24, 1939 - Added size of Anchor Bolts.  
Revised as built.

ESTIMATED QUANTITIES		PIER NO. 4		PIER NO. 5	
Concrete placed under water	1820 cu. yds.	1950	2184	1950	2184
Concrete placed in dry	9700 cu. yds.	5700	5176	5700	5176
Reinforcement	41,900 lbs.	47,340	47,340	47,340	47,340
Wrought Iron	30,640 lbs.	30,640	30,640	30,640	30,640
Steel Sheet Piling left in place	51,400 sq. ft.	5042	51480	5042	51480

**SUBSTRUCTURE**  
PWA PROJECT NO. ME 1020 D  
DEER ISLE SEDWICK BRIDGE DISTRICT  
BRIDGE OVER COGONSON RIVER  
FROM LITTLE DEER ISLAND TO SEDWICK  
PLANNED COUNTY, NEW YORK

**MAIN PIERS NO. 4 & 5**  
**ALTERNATE NO. 1**  
ROBINSON & STEINMAN  
ENGINEERS  
NEW YORK CITY  
SCALE: 1" = 20'  
DRAWING NUMBER  
RS 3310 F113  
REVISIONS

